



**TRIUMPH
GOLD**

REVENUE

Porphyry-epithermal
Au-Ag-Cu-Mo-W



TRIUMPHGOLDCORP.COM

TSX-V: TIG | OTC: TIGCF | FRA: 8N61

INTRODUCTION

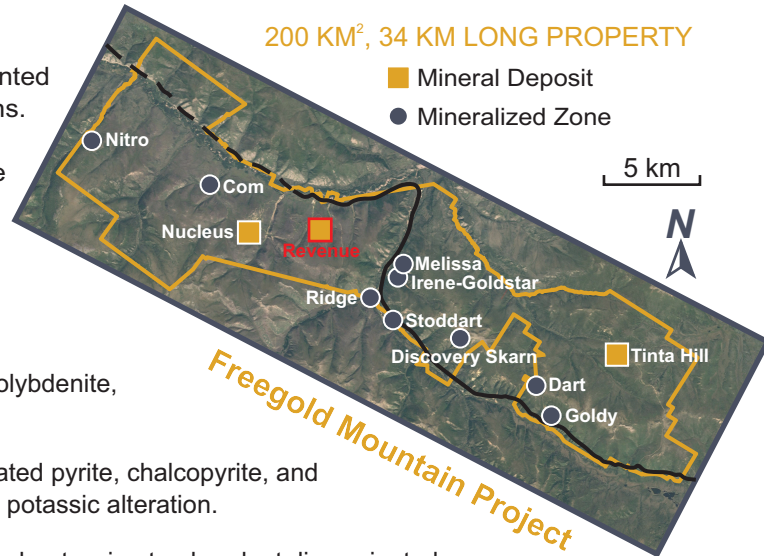
The Revenue deposit is a gold-rich porphyry system locally overprinted by epithermal mineralization hosted by Middle Cretaceous intrusions. The deposit consists of porphyry mineralization and high-grade breccia bodies (WAu and Blue Sky zones) proximal to the Revenue Diatreme.

Porphyry-style mineralization consists of chalcopyrite-molybdenite bearing stockwork veins and disseminated sulphides.

The distinctive epithermal signature of the WAu Zone is derived from quartz-carbonate veins containing variable amounts of chalcopyrite, molybdenite, galena, sphalerite, bismuthinite, scheelite, and visible gold.

Mineralization in the Blue Sky breccia consists of veined and disseminated pyrite, chalcopyrite, and molybdenite. The most intense mineralization is associated with strong potassic alteration.

The Revenue diatreme contains elevated copper and gold values throughout owing to abundant disseminated pyrite with chalcopyrite.



2020 RESOURCE ESTIMATION

	Average Grade							Contained Metal					
	Tonnes (million)	AuEq (g/t)	Au (g/t)	Cu (%)	Ag (g/t)	Mo (%)	W (%)	AuEq (koz)	Au (koz)	Cu (Mlbs)	Ag (koz)	Mo (klbs)	W (klbs)
INDICATED	11.4	0.69	0.38	0.12	2.4	0.016	0.008	252	140	30	895	4089	2082
INFERRED	27.5	0.77	0.51	0.12	2.5	0.009	0.005	677	446	73	2203	5478	2867

Mineral Resource Estimates are current as of February 11, 2020 and were generated by Robert Sim (P.Geo) of SIM Geological Inc, an independent qualified person. Gold Equivalent (AuEq) is calculated based on prices of \$1,500/oz Au, \$18/oz Ag, \$3.00/lb Cu, \$1.00/lb Pb, \$1.25/lb Zn, \$9.00/lb Mo, and \$13.00/lb W. 0.30 g/t AuEq Open Pit cut-off and 1.0 g/t AuEq underground cut-off.

2021 EXPLORATION

The 2021 program expanded the Blue Sky Zone by 100 metres and the WAu Zone by 70metres. The Blue Sky Zone has a modeled strike length of 210 metres, an average width of 70 metres, and extends to a depth of 480 metres below surface. The WAu Zone has a modelled strike length of 250 metres, an average width of 50 metres, and extends to a depth of 525 metres below surface.

