

PRESS RELEASE



November 24, 2021
PR # 21-11

Triumph Gold Drills 80.50 Metres of 1.96 g/t AuEq from the WAu Zone at the Freegold Mountain Project, Yukon

Vancouver, B.C., November 24, 2021 – **Triumph Gold Corp.** (TSX-V: TIG | OTCMKTS: TIGCF | Frankfurt: 8N61) (“Triumph Gold” or “the Company”) is pleased to announce results from 2,154 metres (“m”) of diamond drilling in four holes from the **WAu Zone** within the **Revenue Deposit** at the Freegold Mountain Project (Figure 1), highlighted by 80.5 metres of 1.96 grams per tonne (“g/t”) gold equivalent¹ (“AuEq”) in RVD21-03 (Table 1).

Highlights:

- Intersection of multiple styles of mineralization including epithermal veins, porphyry-style stockwork veins, disseminated sulphides, and sulphide breccias
- Expansion of the **WAu Zone** 70 metres along strike in an east-west orientation
 - 80.50 metres of 1.96 g/t AuEq from 370 metres in **RVD21-03**
 - Containing 1.52 g/t gold (“Au”), 3.74 g/t silver (“Ag”), 0.18% copper (“Cu”), 0.011% molybdenum (“Mo”), and 0.007% tungsten (“W”)
 - 35.00 metres of 0.33 g/t AuEq from 325.0 metres in **RVD21-02**
 - Containing 0.17 g/t Au, 1.04 g/t Ag, 0.05% Cu, 0.008% Mo, and 0.004% W
 - 8.25 metres of 0.40 g/t AuEq from 164.00 metres in **RVD21-04**
 - Containing 0.28 g/t Au, 0.29 g/t Ag, 0.02% Cu, 0.001% Mo, and 0.017% W
 - 6.00 metres of 0.65 g/t AuEq from 179.00 metres in **RVD21-04**
 - Containing 0.54 g/t Au, 0.83 g/t Ag, 0.06% Cu, 0.001% Mo, and 0.002% W
- Intersection of near-surface porphyry-style mineralization with 108.65 metres of 0.40 g/t AuEq from 36.35 metres in **RVD21-01**
 - Containing 0.18 g/t Au, 1.95 g/t Ag, 0.10% Cu, 0.005% Mo, and 0.002% W
- Additional intersection of porphyry-style mineralization further downhole in **RVD21-01** with 60.50 metres of 0.51 g/t AuEq from 162 metres
 - Containing 0.18 g/t Au, 2.11 g/t Ag, 0.10% Cu, 0.022% Mo, and 0.002% W

The **WAu Zone** is defined by 18 drill holes: four new holes from the 2021 program (Tables 1 and 2) and 14 historical holes (Table 3). The **WAu Zone** is a steep south-dipping structurally controlled body of Au-Cu-Ag-Mo-W epithermal mineralization within the Revenue Deposit. The **Revenue Deposit** is made up of the **WAu Zone**, **Blue Sky Zone**, and zones of Cu-Mo-Au porphyry-style mineralization.

The strike length of the **WAu Zone** was expanded 70 metres and is now 75 metres away from the **Blue Sky Zone** (Figure 2). The **WAu Zone** now has a modeled strike length of 250 metres, an average width of 50 metres, and a depth extending 525 metres below surface. All four holes intercepted porphyry-style and epithermal mineralization and each hole had intervals greater than 1 g/t gold.

PRESS RELEASE



**TRIUMPH
GOLD**

Table 1. 2021 Drilling Highlights

Drill Hole	From (m)	To (m)	Interval (m)	AuEq (g/t)	Au (g/t)	Ag (g/t)	Cu (%)	Mo (%)	W (%)	Mineralization Style
RVD21-01	36.35	145.00	108.65	0.40	0.18	1.95	0.10	0.005	0.002	Porphyry-style
RVD21-01	162.00	222.50	60.50	0.51	0.18	2.11	0.10	0.022	0.002	Porphyry-style
RVD21-01	267.13	313.94	46.81	0.44	0.15	2.83	0.09	0.015	0.006	WAu - Breccia/Vein
RVD21-01	403.50	412.50	9.00	0.63	0.18	0.47	0.03	0.004	0.071	Porphyry-style
RVD21-02	73.50	107.00	33.50	0.38	0.13	1.77	0.08	0.005	0.015	Porphyry-style
RVD21-02	325.00	360.00	35.00	0.33	0.17	1.04	0.05	0.008	0.004	WAu - Breccia/Vein
RVD21-03	35.35	46.10	10.75	0.40	0.31	0.74	0.03	<0.001	0.005	Porphyry-style
RVD21-03	113.00	127.15	14.15	0.65	0.58	0.51	0.03	<0.001	0.002	Porphyry-style
RVD21-03	143.00	156.00	13.00	0.42	0.36	0.44	0.03	<0.001	0.001	Porphyry-style
RVD21-03	370.00	450.50	80.50	1.96	1.52	3.74	0.18	0.011	0.007	WAu - Breccia/Vein
RVD21-04	164.00	172.25	8.25	0.40	0.28	0.29	0.02	0.001	0.017	WAu - Breccia/Vein
RVD21-04	179.00	185.00	6.00	0.65	0.54	0.83	0.06	0.001	0.002	WAu - Breccia/Vein
RVD21-04	209.00	243.00	34.00	0.33	0.29	0.31	0.02	<0.001	0.002	Porphyry-style
RVD21-04	253.00	266.00	13.00	0.28	0.25	0.25	0.01	<0.001	0.001	Porphyry-style
RVD21-04	278.00	292.00	14.00	0.39	0.10	1.06	0.06	0.023	0.010	Porphyry-style
RVD21-04	302.00	318.86	16.86	0.32	0.16	0.78	0.04	0.013	0.002	Porphyry-style

¹Refer to the Reference and Disclosure section below for compositing techniques and AuEq calculations.

Table 2. 2021 Drill Hole Summary (Coordinates in UTM NAD83 Zone 8N)

Drill Hole	Easting (m)	Northing (m)	Elevation (m)	Azimuth (°)	Dip (°)	Depth (m)
RVD21-01	383,005	6,913,102	878	328	-71	502.92
RVD21-02	382,958	6,913,021	895	350	-73	603.81
RVD21-03	383,044	6,913,091	870	010	-84	527.30
RVD21-04	383,108	6,913,104	851	350	-75	520.16

*“We are excited about the 2021 drill hole assays to date, which support the current resource and geological reinterpretation at the **WAu Zone** and within the **Revenue Deposit**. We are eagerly awaiting the remainder of the 2021 drill hole assays testing the upper portion of the **Blue Sky Zone** within the **Revenue Deposit**, the **Nucleus Deposit**, the **Big Creek South Fault Zone**, and the **Orbit Zone**,”* stated Brian May, President, Triumph Gold Corp.

PRESS RELEASE



Table 3. Reinterpretation of Historical **WAu Zone** Intercepts

Drill Hole	From (m)	To (m)	Interval (m)	AuEq (g/t)	Au (g/t)	Ag (g/t)	Cu (%)	Mo (%)	W (%)
RVD11-019	171.95	253.09	81.14	2.03	1.34	8.73	0.21	0.030	0.014
RVD11-022	466.10	500.30	34.20	0.60	0.25	2.92	0.03	0.030	0.017
RVD11-028	208.30	250.25	41.95	2.74	0.92	10.99	0.38	0.117	0.074
RVD11-032	423.40	457.80	34.40	0.60	0.82	4.69	0.10	0.009	0.008
RVD17-12	247.50	298.00	50.50	1.69	1.02	8.39	0.24	0.015	0.015
RVD18-03	60.00	132.00	72.00	1.45	0.54	14.01	0.30	0.013	0.034
RVD18-04	92.00	126.00	34.00	1.11	0.47	4.43	0.25	0.014	0.021
RVD18-08	168.00	201.00	33.00	1.54	0.71	6.74	0.34	0.018	0.021
RVD18-11	55.00	105.54	50.54	1.70	0.87	6.50	0.31	0.007	0.040
RVD18-15	96.00	174.25	78.25	0.72	0.26	1.49	0.11	0.045	0.001
RVD18-25B	164.00	185.00	21.00	0.64	0.52	1.24	0.05	0.002	0.001
RVD19-01	495.00	544.00	49.00	0.57	0.19	3.48	0.08	0.025	0.011
RVD19-02	36.50	682.00	645.50	1.27	0.63	5.44	0.18	0.033	0.018
RVD19-06	391.00	434.00	43.00	4.60	4.53	4.92	0.07	0.023	0.016

²Refer to the Reference and Disclosure section below for interpretation method and AuEq calculations.

Detailed Interpretation and Geology

RVD21-03 intercepted the **WAu Zone** and returned 80.50 metres of 1.96 g/t AuEq from 370 metres (Figure 2). This intercept is located 35 metres east of RVD19-02, which had an intercept of 400.48 metres grading 1.21 g/t AuEq³ ([PR#19-16](#)). RVD21-04 stepped out 50 metres eastward from RVD21-03 and intercepted the **WAu Zone** 130 metres above RVD21-03.

The updated expression of the **WAu Zone** is now modeled to be 75 metres from the Blue Sky Zone, suggesting there may be a link between the two zones in a NE orientation (Figure 2).

The **WAu Zone** structure strikes east and dips steeply to the south. This structure hosts milled, jigsaw and crackle breccia textures, and local stockwork veining. Epithermal mineralization is hosted by quartz-carbonate (calcite, ankerite, dolomite) hydrothermal infill containing polymetallic sulphide mineralization (pyrite, pyrrhotite, chalcopyrite, molybdenite, arsenopyrite, scheelite, sphalerite, galena, and bismuthinite) and associated fine grained native gold (Figure 3).

Strong silica +/- biotite alteration is associated with mineralization and has subsequently been overprinted by argillic (kaolinite), SCC (sericite + clay + chlorite), and phyllic (sericite +/- pyrite) alteration confirmed in previous drilling through drillhole spectral data ([PR#21-05](#)).

Porphyry-style mineralization consists of sulphide +/- quartz veinlets and local stockwork veining with broad zones of disseminated sulphide mineralization surrounding vein clusters and local fine grained native gold (Figures 4, 5, and 6).

PRESS RELEASE



Sulphide mineralization (chalcopyrite +/- molybdenite +/- pyrite +/- pyrrhotite and local bismuthinite) is associated with silica +/- biotite +/- argillic alteration.

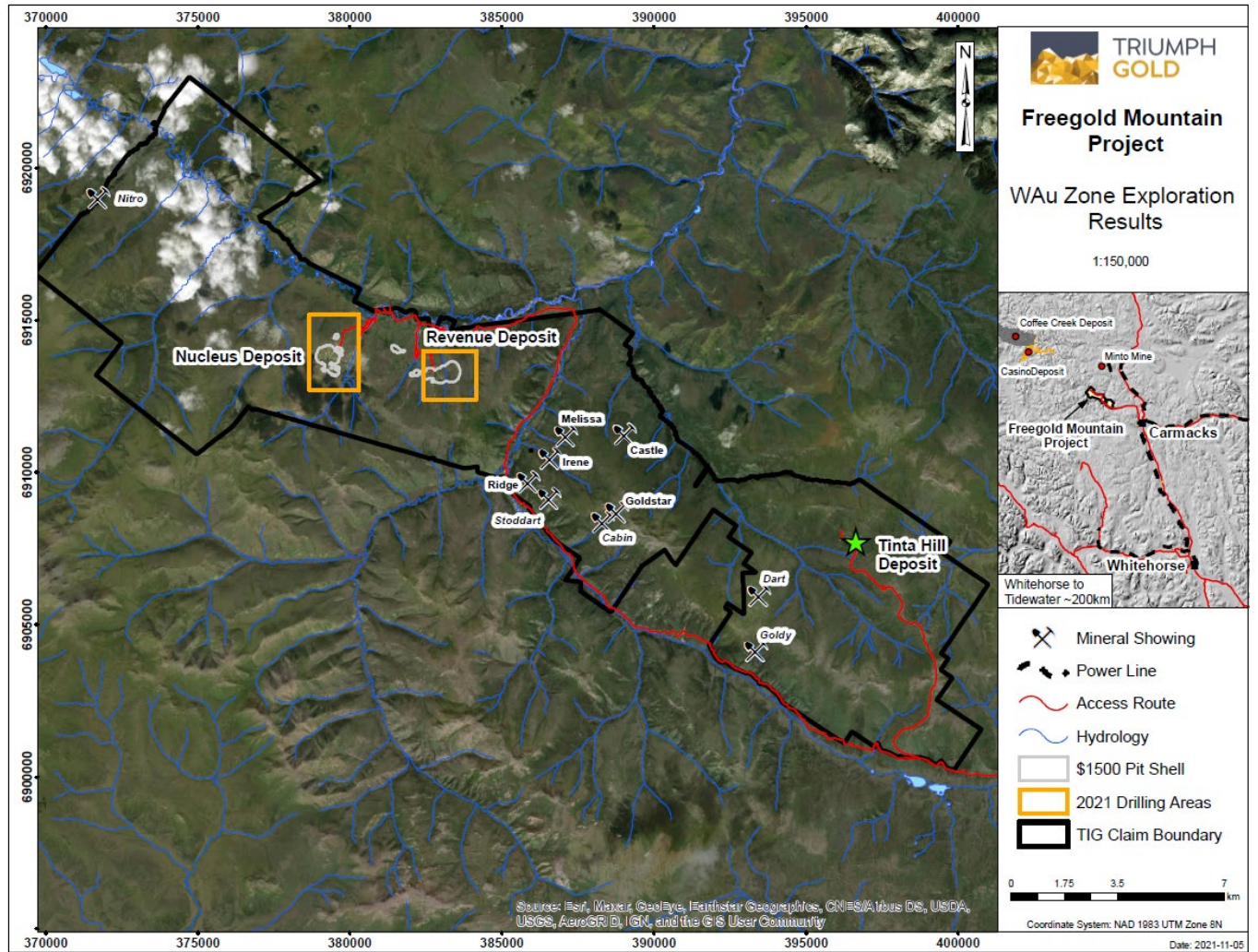
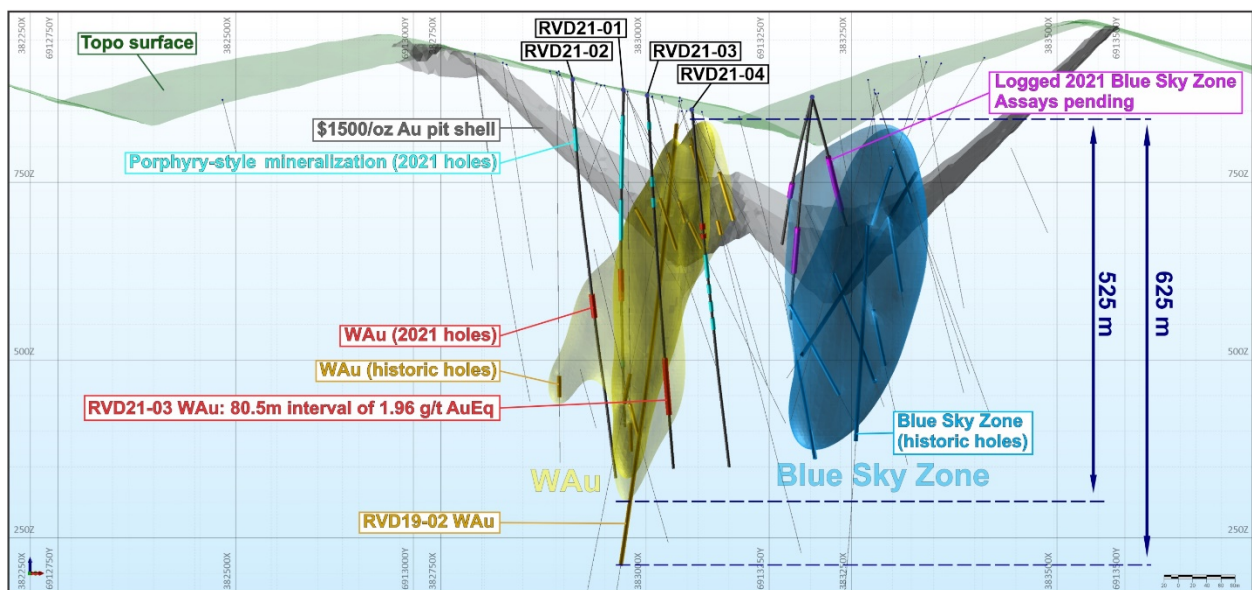
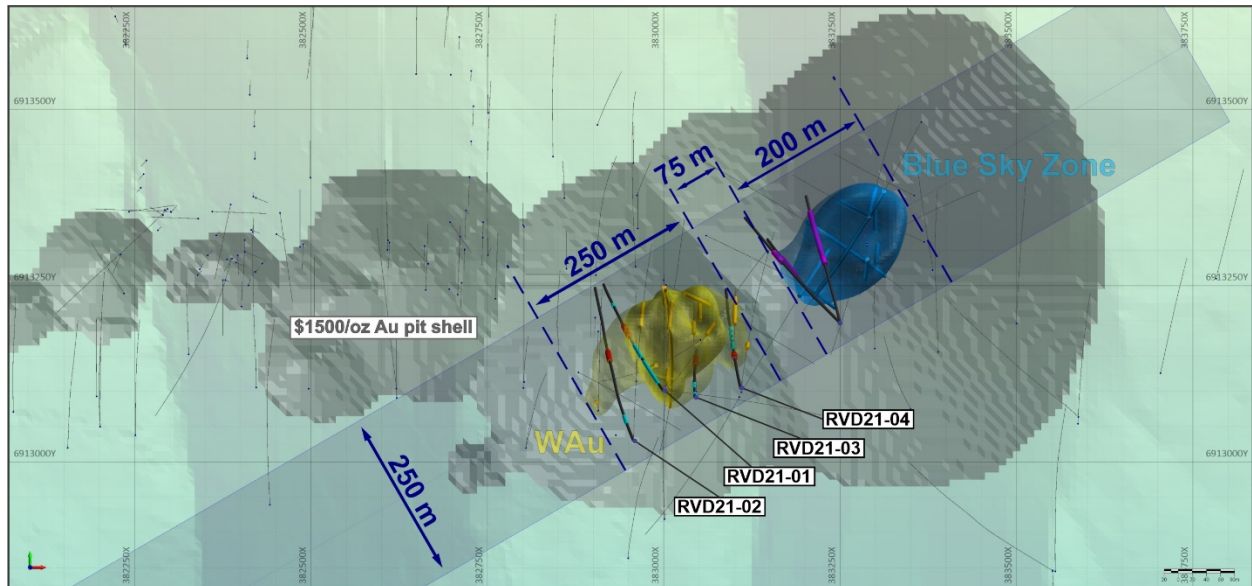


Figure 1. 2021 Drilling Areas on the Freegold Mountain Project.

PRESS RELEASE



**TRIUMPH
GOLD**



[PR#20-02](#)). Significant intercepts in the four drill holes of this release are listed in Table 1 and depicted by red (**WAu Zone**) and cyan bars (porphyry-style mineralization). Historical **WAu Zone** intercepts are depicted by yellow bars and are listed in Table 3. Wireframes were generated using Micromine’s implicit modeling tools.

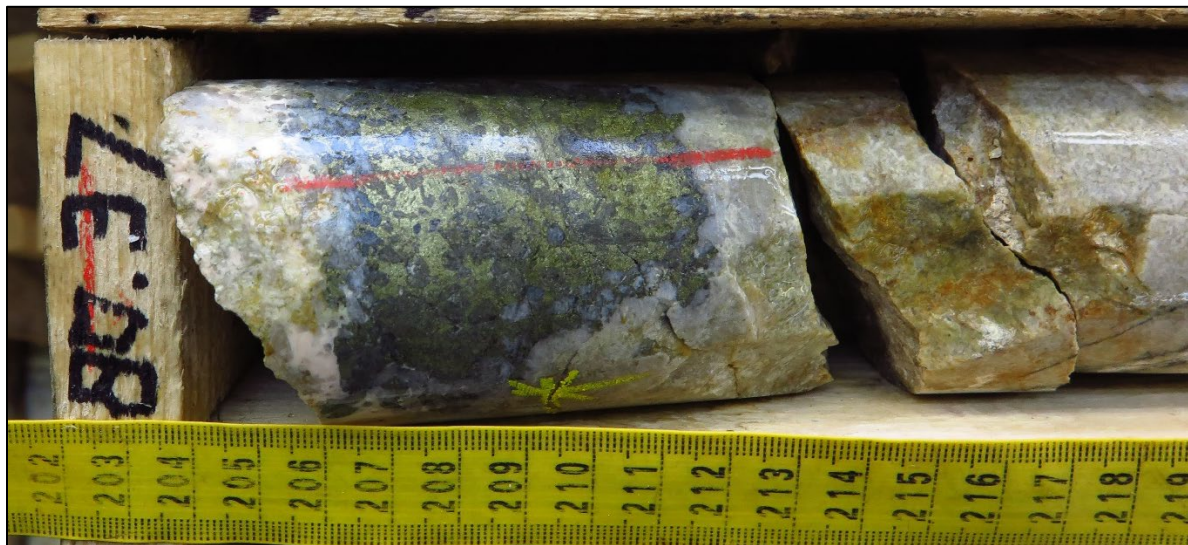
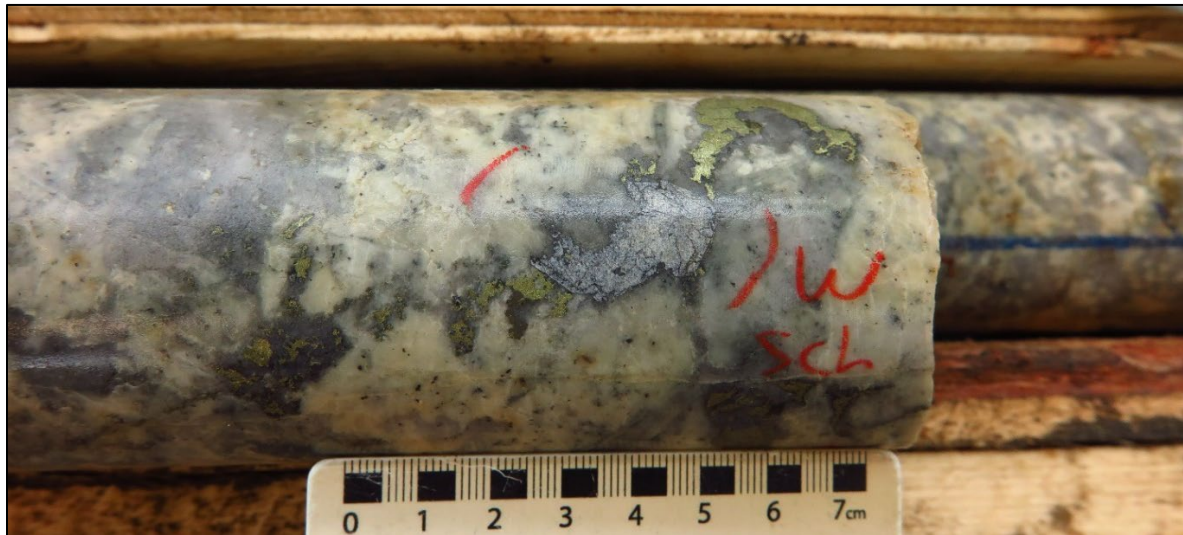
For further information
please visit our website at
www.triumphgoldcorp.com

1100 – 1111 Melville Street
Vancouver, BC, Canada, V6E 3V6
Tel: 604.893.8757

PRESS RELEASE



TRIUMPH
GOLD



For further information
please visit our website at
www.triumphgoldcorp.com

1100 – 1111 Melville Street
Vancouver, BC, Canada, V6E 3V6
Tel: 604.893.8757

PRESS RELEASE



TRIUMPH
GOLD

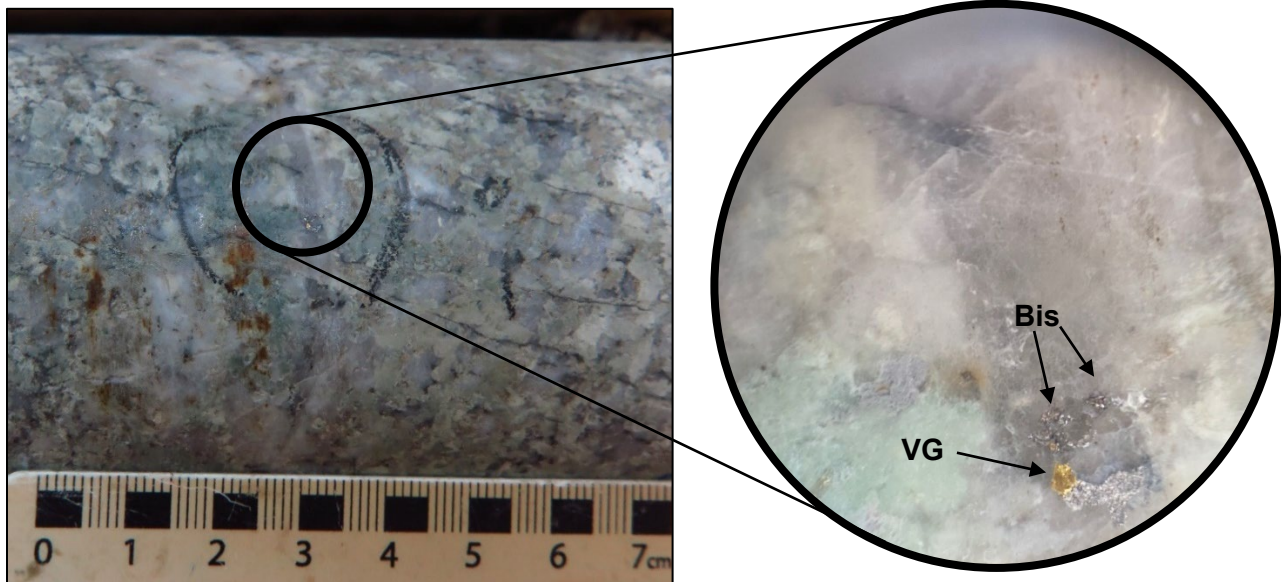
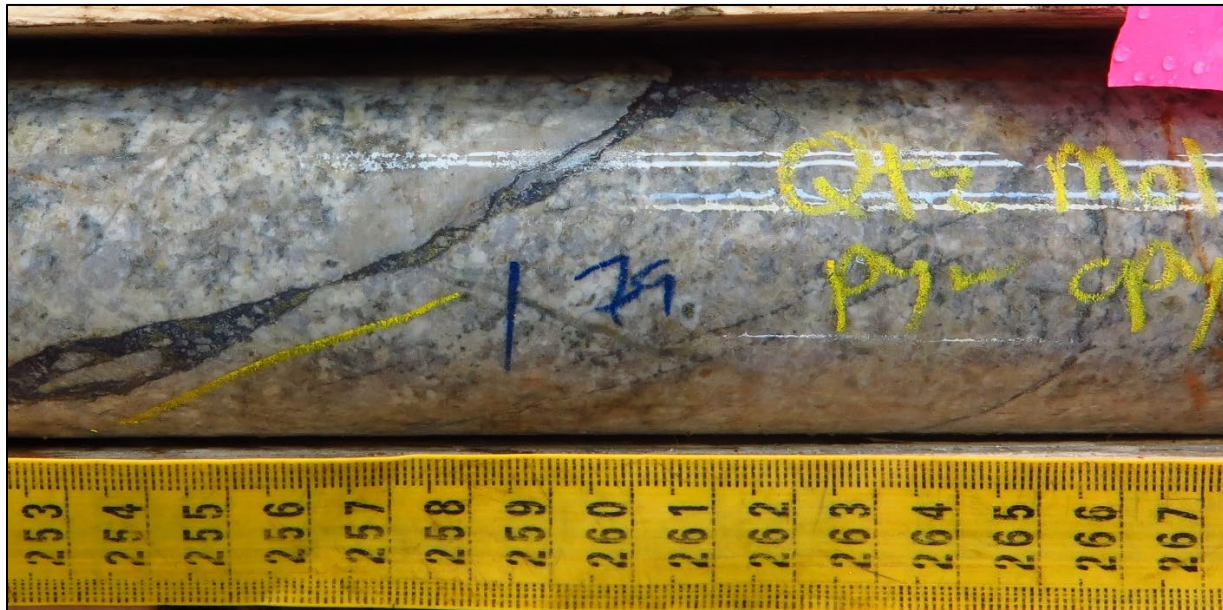


Figure 6. Visible gold (VG) from RVD21-03 at 121.20 metres returned 3.77g/t Au over 0.6m. Mineralization is hosted within quartz + bismuthinite (Bis) veinlet in SCC altered granodiorite.

For further information
please visit our website at
www.triumphgoldcorp.com

1100 – 1111 Melville Street
Vancouver, BC, Canada, V6E 3V6
Tel: 604.893.8757

PRESS RELEASE



**TRIUMPH
GOLD**

Table 4. 2021 Significant Intercepts (Highlighted Intercepts are reported in Table 1)

Drill Hole	From (m)	To (m)	Interval (m)	AuEq (g/t)	Au (g/t)	Ag (g/t)	Cu (%)	Mo (%)	W (%)	Mineralization Style
RVD21-01	36.35	145.00	108.65	0.40	0.18	1.95	0.10	0.005	0.002	Porphyry-style
<i>Including</i>	63.53	64.83	1.30	2.16	1.15	10.10	0.47	0.022	0.002	Porphyry-style
<i>Including</i>	76.21	78.21	2.00	1.70	1.27	4.40	0.20	0.009	0.002	Porphyry-style
RVD21-01	162.00	222.50	60.50	0.51	0.18	2.11	0.10	0.022	0.002	Porphyry-style
<i>Including</i>	162.00	164.00	2.00	1.30	0.41	5.40	0.25	0.068	0.005	Porphyry-style
<i>Including</i>	174.68	179.00	4.32	1.49	0.27	5.13	0.24	0.129	0.002	Porphyry-style
RVD21-01	228.65	262.00	33.35	0.35	0.12	1.15	0.06	0.012	0.009	Porphyry-style
RVD21-01	267.13	313.94	46.81	0.44	0.15	2.83	0.09	0.015	0.006	WAu - Breccia/Vein
<i>Including</i>	288.00	289.50	1.50	1.12	0.13	12.90	0.44	0.011	0.013	WAu - Breccia/Vein
<i>Including</i>	309.50	310.50	1.00	1.98	0.17	37.10	0.75	0.018	0.003	WAu - Breccia/Vein
RVD21-01	403.50	412.50	9.00	0.63	0.18	0.47	0.03	0.004	0.071	WAu - Breccia/Vein
<i>Including</i>	408.00	409.50	1.50	1.89	0.20	1.10	0.06	0.003	0.306	WAu - Breccia/Vein

Drill Hole	From (m)	To (m)	Interval (m)	AuEq (g/t)	Au (g/t)	Ag (g/t)	Cu (%)	Mo (%)	W (%)	Mineralization Style
RVD21-02	73.50	107.00	33.50	0.38	0.13	1.77	0.08	0.005	0.015	Porphyry-style
<i>Including</i>	77.00	78.00	1.00	1.24	0.58	2.80	0.09	0.018	0.074	Porphyry-style
<i>Including</i>	81.10	82.30	1.20	1.07	0.48	5.20	0.23	0.005	0.025	Porphyry-style
<i>Including</i>	96.00	97.54	1.54	1.07	0.17	6.90	0.31	0.011	0.050	Porphyry-style
<i>Including</i>	100.12	101.05	0.93	1.07	0.08	7.50	0.31	0.003	0.075	Porphyry-style
RVD21-02	178.31	199.86	21.55	0.28	0.16	1.26	0.06	0.002	0.002	Porphyry-style
RVD21-02	210.31	235.00	24.69	0.25	0.16	0.99	0.04	0.001	0.001	Porphyry-style
RVD21-02	260.00	269.70	9.70	0.64	0.53	1.55	0.04	0.002	0.001	Porphyry-style
<i>Including</i>	266.00	267.85	1.85	2.32	2.18	2.30	0.06	0.001	0.001	Porphyry-style
RVD21-02	325.00	360.00	35.00	0.33	0.17	1.04	0.05	0.008	0.004	WAu - Breccia/Vein
<i>Including</i>	325.00	326.00	1.00	1.07	0.37	5.40	0.31	0.012	0.014	WAu - Breccia/Vein
RVD21-02	440.00	450.00	10.00	0.25	0.13	0.70	0.04	0.005	0.005	Porphyry-style

For further information
please visit our website at
www.triumphgoldcorp.com

1100 – 1111 Melville Street
Vancouver, BC, Canada, V6E 3V6
Tel: 604.893.8757

PRESS RELEASE



**TRIUMPH
GOLD**

Drill Hole	From (m)	To (m)	Interval (m)	AuEq (g/t)	Au (g/t)	Ag (g/t)	Cu (%)	Mo (%)	W (%)	Mineralization Style
RVD21-03	35.35	46.10	10.75	0.40	0.31	0.74	0.03	<0.001	0.005	Porphyry-style
RVD21-03	113.00	127.15	14.15	0.65	0.58	0.51	0.03	<0.001	0.002	Porphyry-style
<i>Including</i>	114.50	116.00	1.50	2.95	2.84	1.10	0.06	<0.001	0.002	Porphyry-style
<i>Including</i>	121.15	121.75	0.60	3.83	3.77	0.60	0.03	<0.001	0.001	Porphyry-style
RVD21-03	143.00	156.00	13.00	0.42	0.36	0.44	0.03	<0.001	0.001	Porphyry-style
<i>Including</i>	146.00	147.50	1.50	1.15	1.07	0.90	0.04	<0.001	0.001	Porphyry-style
RVD21-03	181.60	182.10	0.50	3.47	3.42	0.25	0.02	<0.001	0.001	Porphyry-style
RVD21-03	327.50	343.00	15.50	0.26	0.09	0.86	0.05	0.011	0.002	Porphyry-style
RVD21-03	370.00	450.50	80.50	1.96	1.52	3.74	0.18	0.011	0.007	WAu - Breccia/Vein
<i>Including</i>	370.00	428.00	58.00	2.56	2.04	4.72	0.23	0.008	0.008	WAu - Breccia/Vein
<i>And</i>	394.50	396.00	1.50	10.04	9.46	6.90	0.28	<0.001	0.008	WAu - Breccia/Vein
<i>And</i>	417.00	422.00	5.00	4.21	3.32	6.81	0.40	0.019	0.010	WAu - Breccia/Vein
<i>And</i>	426.00	428.00	2.00	1.13	0.94	0.25	0.01	0.027	0.001	WAu - Breccia/Vein
RVD21-03	517.00	523.00	6.00	0.75	0.72	0.25	0.01	0.001	0.003	Porphyry-style
<i>Including</i>	521.00	523.00	2.00	1.62	1.60	0.25	0.00	0.001	0.003	Porphyry-style

Drill Hole	From (m)	To (m)	Interval (m)	AuEq (g/t)	Au (g/t)	Ag (g/t)	Cu (%)	Mo (%)	W (%)	Mineralization Style
RVD21-04	63.50	73.00	9.50	0.28	0.23	0.33	0.02	<0.001	0.002	Porphyry-style
RVD21-04	164.00	172.25	8.25	0.40	0.28	0.29	0.02	0.001	0.017	WAu - Breccia/Vein
<i>Including</i>	171.25	172.25	1.00	1.92	1.70	0.60	0.04	0.003	0.025	WAu - Breccia/Vein
RVD21-04	179.00	185.00	6.00	0.65	0.54	0.83	0.06	0.001	0.002	WAu - Breccia/Vein
<i>Including</i>	183.00	185.00	2.00	1.04	1.00	0.25	0.02	<0.001	0.001	Porphyry-style
RVD21-04	209.00	243.00	34.00	0.33	0.29	0.31	0.02	<0.001	0.002	Porphyry-style
<i>Including</i>	221.00	223.00	2.00	1.78	1.71	0.60	0.03	<0.001	0.002	Porphyry-style
RVD21-04	253.00	266.00	13.00	0.28	0.25	0.25	0.01	<0.001	0.001	Porphyry-style
RVD21-04	278.00	292.00	14.00	0.39	0.10	1.06	0.06	0.023	0.010	Porphyry-style
RVD21-04	302.00	318.86	16.86	0.32	0.16	0.78	0.04	0.013	0.002	Porphyry-style
RVD21-04	336.00	342.00	6.00	0.25	0.22	0.25	0.01	<0.001	0.002	Porphyry-style
<i>Including</i>	363.55	364.35	0.80	1.44	0.20	19.80	0.60	0.002	0.003	Porphyry-style

¹ Gold equivalent [AuEq] is used for illustrative purposes, to express the combined value of gold, silver, copper, molybdenum, and tungsten as a percentage of gold. No allowances have been made for recovery losses that would occur in a mining scenario. AuEq is calculated using US\$1750.00 per troy ounce of gold, US\$24.00 per troy ounce of silver, US\$4.00 per pound of copper, US\$15.00 per pound of molybdenum, and US\$13.00 per pound of tungsten.

For further information
please visit our website at
www.triumphgoldcorp.com

1100 – 1111 Melville Street
Vancouver, BC, Canada, V6E 3V6
Tel: 604.893.8757

PRESS RELEASE



$AuEq = Au \text{ g/t} + (Ag \text{ g/t} \times \$24.00 / \$1750.00) + (Cu\% \times \$4.00 \times 22.0462) / (\$1750.00 / 31.10) + (Mo\% \times \$15.00 \times 22.0462) / (\$1750.00 / 31.10) + (W\% \times \$13.0 \times 22.0462) / (\$1750.00 \times 31.10)$
Reported assay intervals are calculated using Micromine's grade composite tool with a >0.25g/t AuEq cutoff, constrained by <6 metres of consecutive dilution. High-grade intervals are reported using >1.0g/t AuEq cutoff with no dilution.

Reported assays are uncut weighted averages and represent drilled core lengths. The true width of reported mineralization is unknown.

² Reinterpretation of the WAu Zone was completed by reviewing historical drill holes along trend. Geological data (core logs, assays, and core photos) were inspected for structural and geochemical signatures that match characteristics of the Wau Zone. AuEq values are reported using current metal prices for both historical and newly identified intercepts.

³ AuEq reported in PR19-06 is calculated using US\$1,510 per troy ounce of gold, US\$17.00 per troy ounce of silver, US\$2.5 per pound of copper and US\$12.7 per pound of molybdenum $AuEq = (\$1510.00 \times Au \text{ [g/t]} / 31.10 + \$17.00 \times Ag \text{ [g/t]} / 31.10 + \$2.50 \times Cu \text{ [%]} / 100 \times 2204.63 + \$12.70 \times Mo \text{ [%]} / 100 \times 2204.63) / \1510.00×31.10 .

Sample Preparation and QAQC

Diamond drill holes at the Freegold Mountain Project are drilled using HTW and NTW core sizes (70.92 millimetres and 56.00 millimetres diameter respectively). Drill core samples average 1.63 metres in length with a minimum length of 0.50 metres and a maximum length of 2.80 metres. Drill core is cut along the long axis of the core over the entire length of the drill hole. Sample intervals are defined by mineralization, lithology, structure, and alteration boundaries.

Sample preparation is completed at ALS Whitehorse with sample pulps shipped to ALS Vancouver for analyses. Samples are dried and crushed to 70% less than 2 millimetres with a 250-gram riffle-split and pulverized to better than 85% passing 75 microns (PREP-31).

A 50-gram sample from the pulp is analyzed for gold using fire assay techniques and atomic absorption spectroscopy with detection limits of 0.005-10 parts per million ("ppm") (Au-AA24). Gold overlimit values are re-analyzed using a gravimetric finish with an upper detection limit of 10,000 ppm (Au-GRA22). A 0.25 gram sample from the pulp is analyzed with multi-element geochemistry (ME-ICP-61) using a 4-acid near total digestion and induced coupled plasma atomic emission spectroscopy (ICP-AES) providing 33 element output (Ag, Al, As, Ba, Be, Bi, Ca, Cd, Co, Cr, Cu, Fe, Ga, K, La, Mg, Mn, Mo, Na, Ni, P, Pb, S, Sb, Sc, Sr, Th, Ti, Tl, U, V, W, Zn).

Sample Quality Assurance/Quality Control ("QAQC") measures include unmarked certified reference materials (CRMs), rock blanks, and field duplicates are inserted into the sample sequence and make up 5% of the samples submitted to the lab for holes reported in this release. Additional QAQC checks are ongoing in accordance with 43-101 standards.

For further information
please visit our website at
www.triumphgoldcorp.com

1100 – 1111 Melville Street
Vancouver, BC, Canada, V6E 3V6
Tel: 604.893.8757

PRESS RELEASE



Qualified Person

The technical content of this news release has been reviewed and approved by Brian May, P.Geo., President of the Company and qualified person as defined by National Instrument 43-101 – Standards of Disclosure for Mineral Projects.

About Triumph Gold Corp.

Triumph Gold Corp. is a Canadian based, growth-oriented exploration and development company with a district scale land package in mining friendly Yukon. The Company's 100% owned, road accessible, flagship Freegold Mountain Project in the Dawson Range Au-Cu Belt is host to three NI 43-101 Mineral Deposits (Nucleus, Revenue, and Tinta Hill). The Project is 200 square kilometres and covers an extensive section of the Big Creek Fault zone, a structure directly related to epithermal gold and silver mineralization as well as gold-rich porphyry copper mineralization.

Led by an experienced management and technical team, Triumph Gold is focused on actively advancing the Freegold Mountain Project using multidiscipline exploration and evaluation techniques.

The Company owns 100% of the Big Creek and Tad/Toro copper-gold properties situated along strike of the Freegold Mountain Project within the Dawson Range.

The Company also owns 100% of the Andalusite Peak copper-gold property, situated 36 km southeast of Dease Lake within the Stikine Range in British Columbia.

For more information, please visit triumphgoldcorp.com.

On behalf of the Board of Directors

Signed "John Anderson"

John Anderson, Executive Chairman

For further information about Triumph Gold Please contact:

For further information
please visit our website at
www.triumphgoldcorp.com

1100 – 1111 Melville Street
Vancouver, BC, Canada, V6E 3V6
Tel: 604.893.8757

PRESS RELEASE



**John Anderson, Executive Chairman
Triumph Gold Corp.**

(604) 218-7400

janderson@triumphgoldcorp.com

**Nancy Massicotte
IR Pro Communications Inc.**

(604) 507-3377

nancy@irprocommunications.com

Neither the TSX Venture Exchange nor its Regulation Services Provider (as that term is defined in policies of the TSX Venture Exchange) accepts responsibility for the adequacy or accuracy of this release.

This news release contains forward-looking information, which involves known and unknown risks, uncertainties and other factors that may cause actual events to differ materially from current expectation. Important factors - including the availability of funds, the results of financing efforts, the completion of due diligence and the results of exploration activities - that could cause actual results to differ materially from the Company's expectations are disclosed in the Company's documents filed from time to time on SEDAR (see www.sedar.com). Readers are cautioned not to place undue reliance on these forward-looking statements, which speak only as of the date of this press release. The company disclaims any intention or obligation, except to the extent required by law, to update or revise any forward-looking statements, whether as a result of new information, future events or otherwise.

For further information
please visit our website at
www.triumphgoldcorp.com

1100 – 1111 Melville Street
Vancouver, BC, Canada, V6E 3V6
Tel: 604.893.8757